

The logo for 'Transforming Rotherham' is enclosed in a dark blue rectangular border. The text 'TRANSFORMING' is on the top line and 'ROTHERHAM' is on the bottom line. Both words are in a bold, sans-serif font. The letters are filled with a pattern of diagonal stripes in shades of green and dark blue.

TRANSFORMING ROTHERHAM

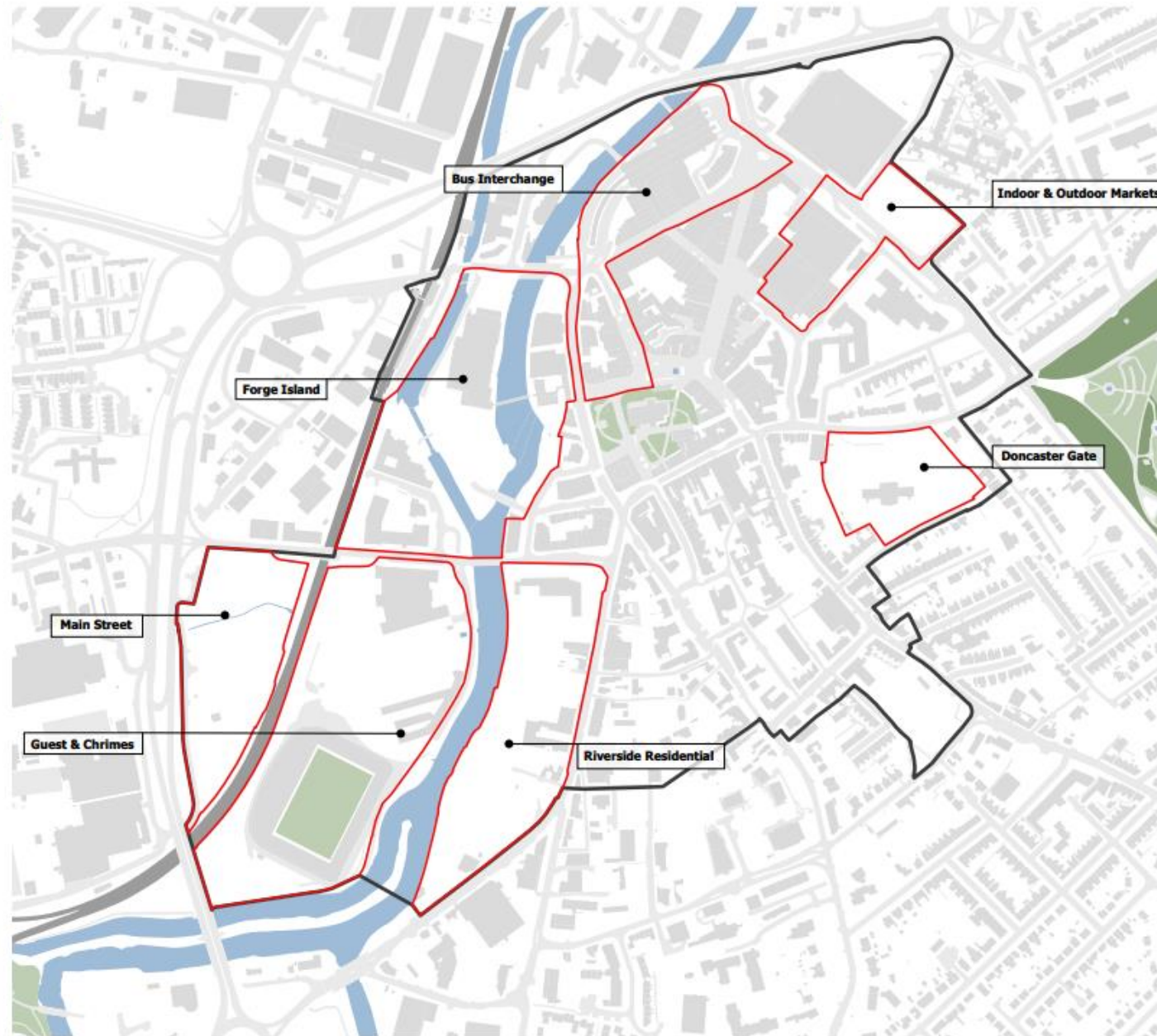
**IMPROVING PLACES SELECT COMMISSION
TOWN CENTRE UPDATE REPORT
DECEMBER 2022**

Development Opportunities

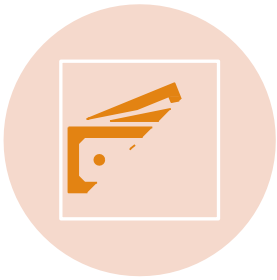
Several key sites have been identified which can support regeneration of the Town Centre and new development projects. This includes the following:

- Forge Island;
- The Riverside site;
- Doncaster Gate;
- The Guest and Chrimes site;
- Main Street;
- The Interchange; and
- Rotherham Markets.

To inform the masterplan and development proposals for these sites, a constraints and opportunities assessment has been undertaken for each. This includes considerations including existing buildings, flood zones, utilities apparatus and access arrangements. This section draws together key data for each site as basis for the development proposals.



External Funding secured



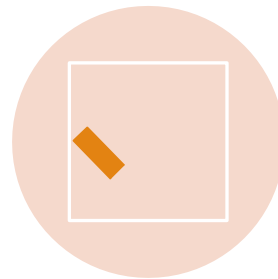
Future High Street Fund



Levelling Up Fund



Towns Deal



Regional Devolved
Funds

Leisure and Cultural Quarter



Forge Island



Riverside Gardens



Corporation Street

DRAFT - Illustrative only subject to design revision

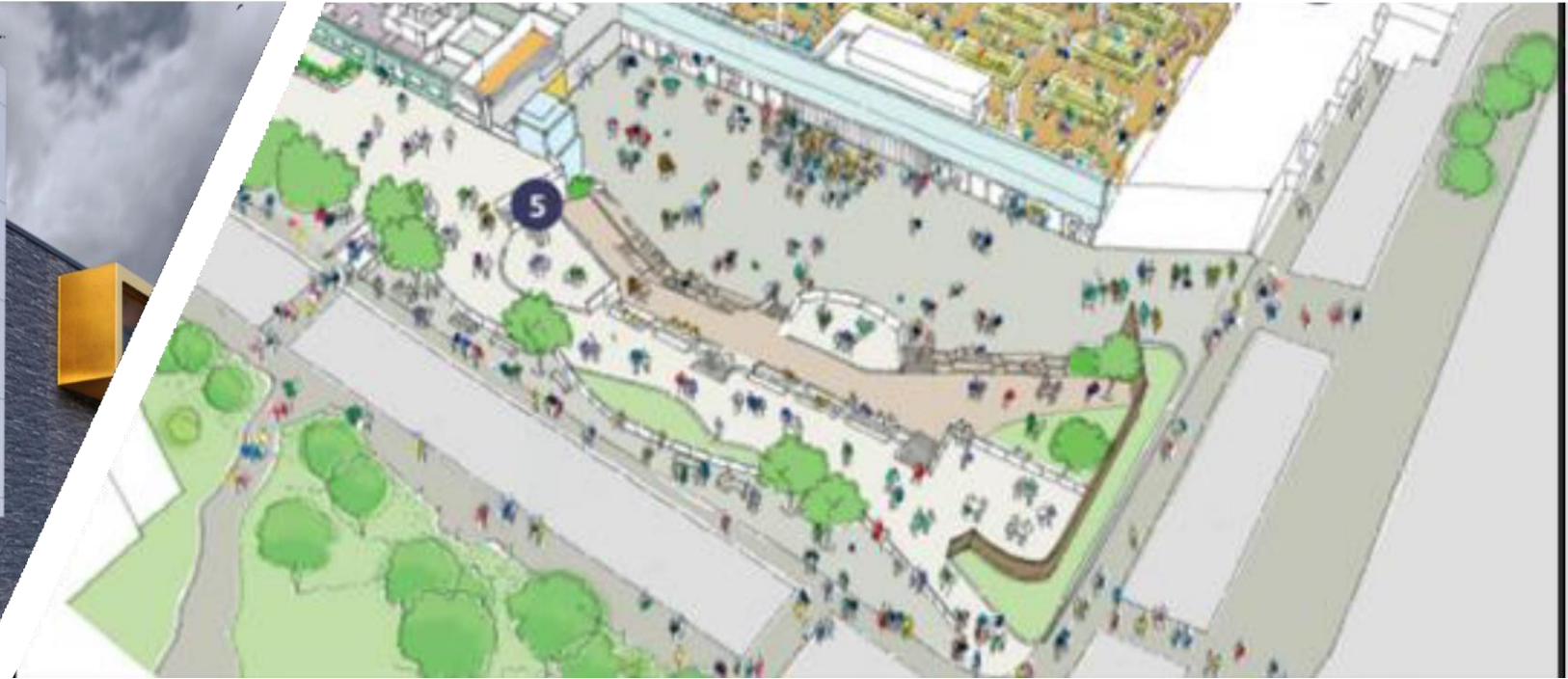


DRAFT - Illustrative only subject to design revision





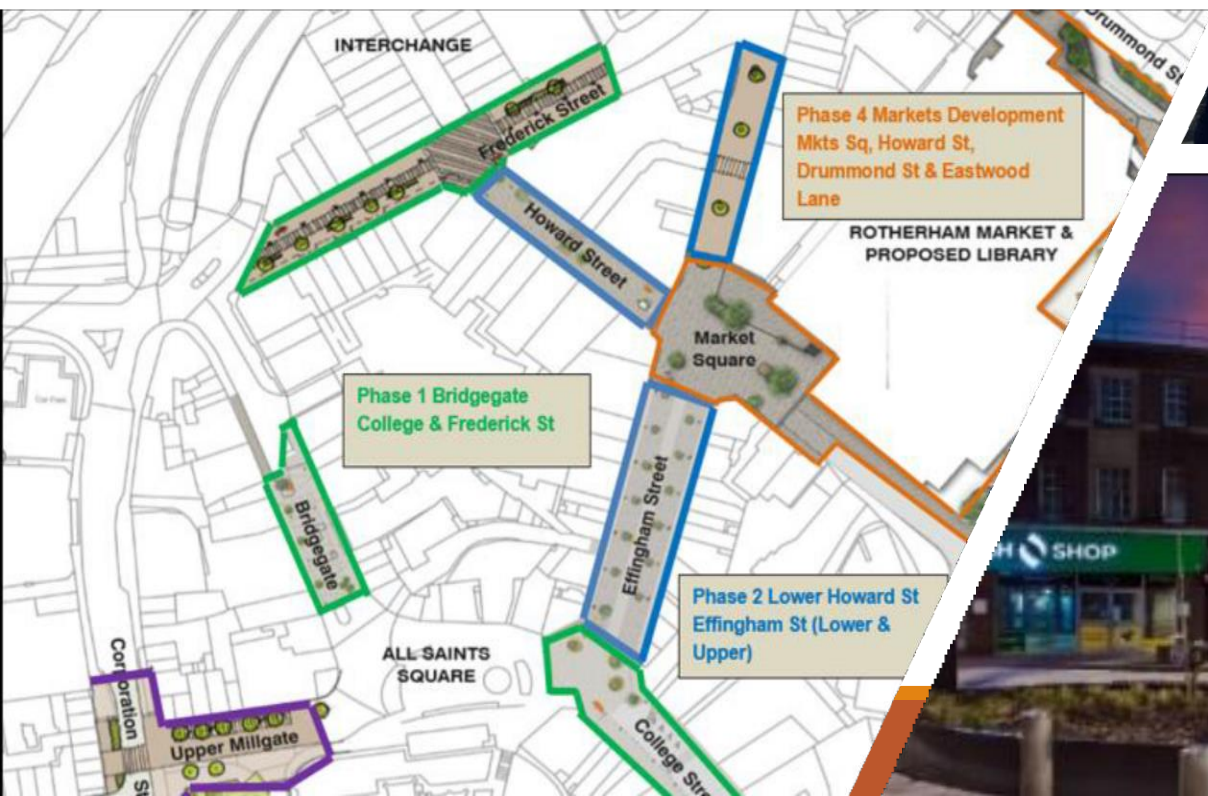
Riverside Residential



Markets and Library



Snail Yard



Public Realm

GRIMM & CO

